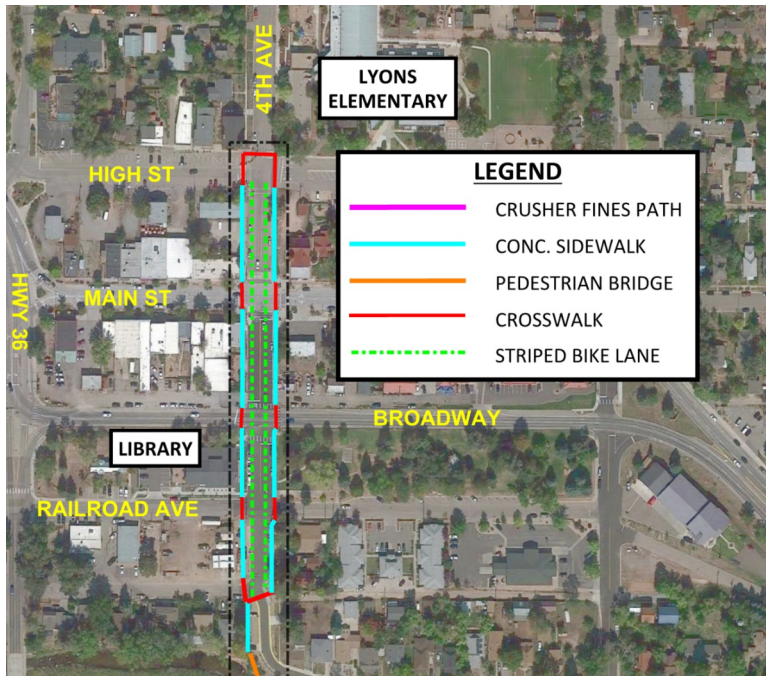


4th Avenue

Pedestrian Bridge

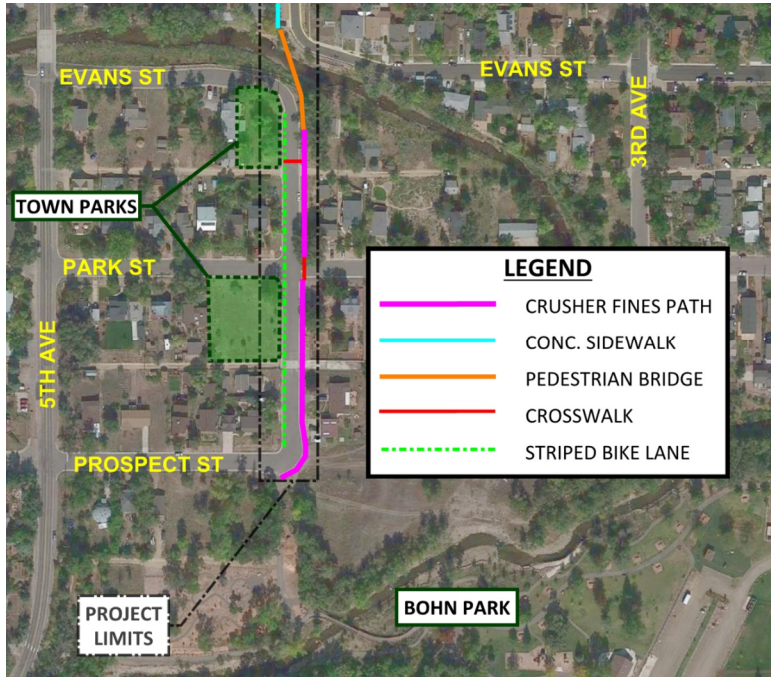
A Colorado Safe Routes to
School Project



Proposed improvements north of St. Vrain Creek

Project Goals

- Encourage children to safely walk and bike to school
- Reduce risk of injury to all pedestrians
- Provide connectivity between the Town's public schools and different neighborhoods, especially parts of town separated by St. Vrain Creek



Proposed improvements south of St. Vrain Creek

Project Goals

- Encourage children to safely walk and bike to school
- Reduce risk of injury to all pedestrians
- Provide connectivity between the Town's public schools and different neighborhoods, especially parts of town separated by St. Vrain Creek

Current Conditions Along 4th Ave



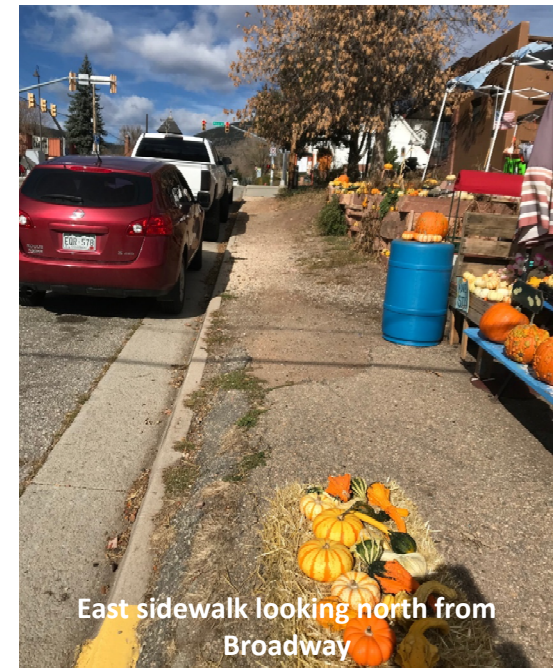
4th Ave. Looking north from Broadway



Intersection of 4th Ave and Park Dr.
looking north



East side of 4th Ave. looking north from alley
between Prospect St. and Park St.



East sidewalk looking north from
Broadway

Prefabricated Pedestrian Bridge

- 105' long, 8' wide bridge, 4-foot high horizontal railing
- Installed onto reinforced concrete abutments secured with flood anchors
- Concrete decking poured after installation





South-Side Approach Span (facing East)

Concrete landings for ADA
compliance

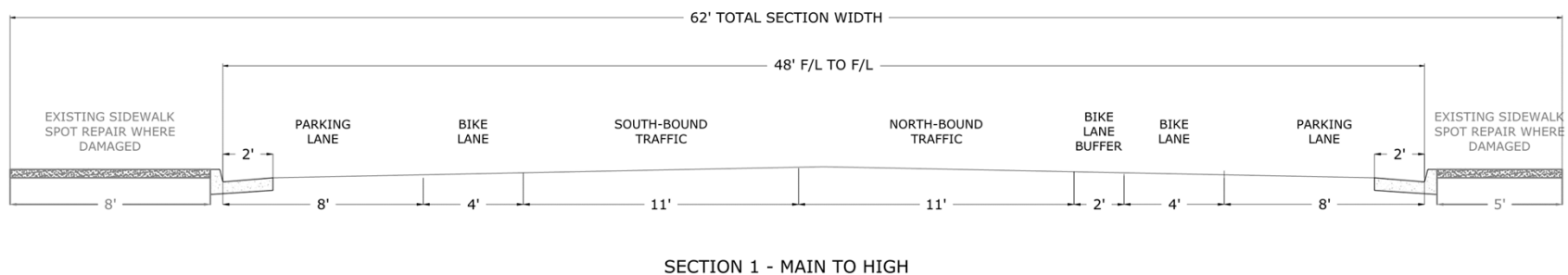
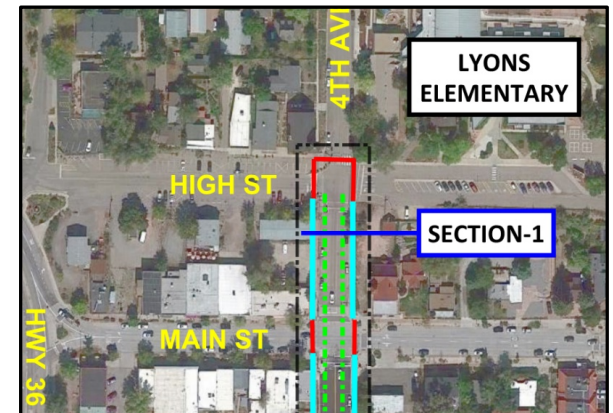
Notes:

1. East to west alignment required to accommodate ADA compliant approaches and ramp
2. Approach span design to match color and aesthetics of main span



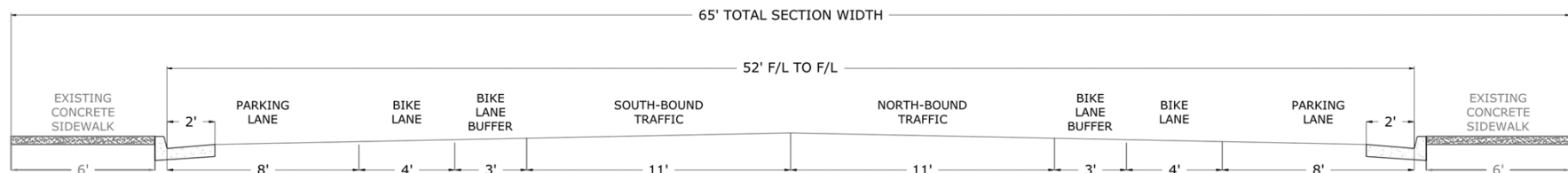
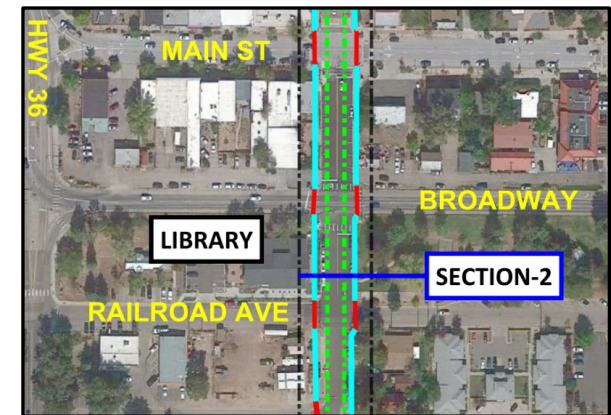
Section 1: Main St to High St

- Replace deteriorating concrete sidewalk and C/G on W side of 4th Ave.
- Spot repair of damages sections of sidewalk on E side of 4th Ave.
- Dedicated bike and parking lanes on both sides of the street
- Safety separation between bike and driving lanes on E side of 4th Ave



Section 2: Railroad Ave to Broadway

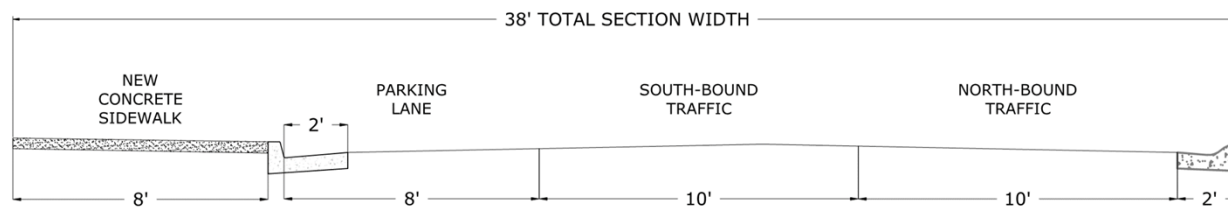
- Dedicated bike and parking lanes on both sides of the street
- Keep existing concrete sidewalk and C/G on both sides of street
- Safety separation between bike and driving lanes on both sides



SECTION 2 - RAILROAD TO BROADWAY

Section 3: Bridge to Park Dr

- 8' concrete walk on W side of 4th Ave to match width of bridge
- Parking lane on W side of street
- Crosswalk at Park Dr to provide connectivity to northbound SRTS pathway

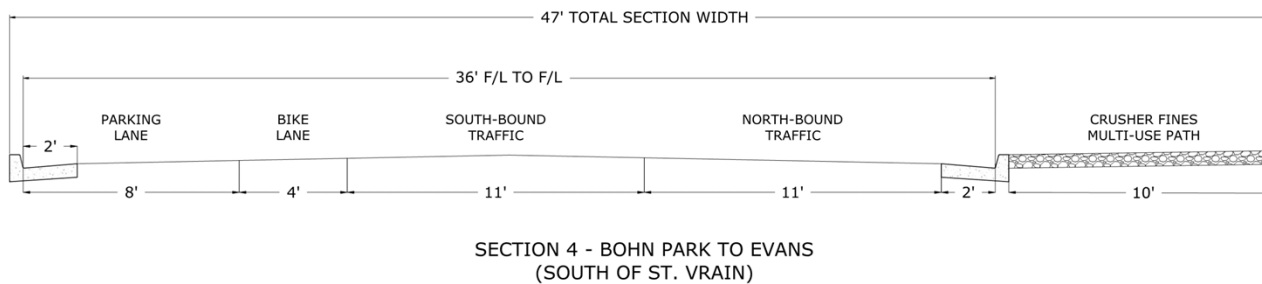


SECTION 3 - BRIDGE TO PARK DR



Section 4: Bohn Park to Evans St south of St. Vrain Creek

- Dedicated parking lane and bike lane on W side of 4th Ave
- New 10' wide crusher fines multi-use pathway on E side of 4th Ave
- Crosswalks to provide connectivity to confluence buyout properties/future parks



Section 4: East Side Alignment South of St. Vrain Creek

- Bridge landing is located on east side
- Additional clearance between road and trees
- Reduced utility conflicts
- Less cross traffic across path
- Reduced number of crosswalks for path





Artistic rendering of pedestrian bridge