



photo by David Strom



## COMMUNITY CALENDAR

### DECEMBER

- 7 Board of Trustees Meeting
- 21 Board of Trustees Meeting
- 24 Christmas Eve  
Town Hall Closure
- 25 Christmas Day  
Town Hall Closure

### JANUARY

- 1 New Years Day  
Town Hall Closure
- 4 Board of Trustees Meeting
- 18 Martin Luther King Jr. Day  
Town Hall Closure
- 19 Board of Trustees Meeting

## SUPPORT LOCAL

Help keep Lyons shops open

Ninety-eight percent of businesses in Lyons are independently owned! Locals are often the most important customer base for small businesses. Consider doing more of your holiday shopping in Lyons this year; these town jewels are known to have treasures for everyone on your list!



*Home for the Holidays*

2020 Holiday Season in Lyons

*Saturday, December 5*  
Virtual Visits with Santa | 9:00 a.m. to 2:20 p.m.  
Santa Caravan with Live Music | 4:15 p.m.  
Frozen Parade | 6:00 to 8:30 p.m.

*Saturday, December 12*  
Virtual Visits with Santa | 9:00 a.m. to 2:20 p.m.

*Daily, Beginning December 5-31*  
Community Tree in LaVern Johnson Park | Add Your Own Ornament



[lyonscolorado.com/holiday](http://lyonscolorado.com/holiday)

## HOME FOR THE HOLIDAYS

### Santa

Santa is coming to town! Before the Frozen Parade, Santa will route through local neighborhoods on his sleigh, with a live musical performance to accompany him. The route will begin at 4:15 p.m. on Dec. 5.

Santa is also doing one-on-one visits from the North Pole! Sign up for a five- or ten-minute online visit with Santa. Slots are available from 9 a.m. to 2:20 p.m. on December 5 and 12, and are free of cost!

### Frozen Parade

Let's brighten the night and everyone's spirits as we celebrate this tradition in a safe and beautiful way! This year, the traditional Holiday Parade of Lights is transforming into a safe event, as a stationary, Frozen Parade! The Frozen Parade of Lights will feature illuminated vehicles and trailers along High Street, as decorated by residents and businesses. Spectators can drive through, to both enjoy and become part of the parade! The Frozen Parade will be from 6 to 8:30 p.m. on Saturday, Dec. 5, on High St.

### Community Tree

Celebrate community at a safe distance, by adding an ornament to the community tree in LaVern Johnson Park.

Find all the information on this year's holiday activities at [lyonscolorado.com/holiday](http://lyonscolorado.com/holiday).

Sign up for Town-related emails and updates at [www.townoflyons.com/signup](http://www.townoflyons.com/signup)

## RECYCLE THESE HOLIDAY LEFTOVERS!



### Batteries

RECYCLE AT THESE LOCATIONS ONLY, NOT in curbside bins

#### Rechargeable Batteries:

- Boulder County Hazardous Materials Management Facility
- Longmont Waste Diversion Center

#### Alkaline Batteries:

- Boulder County Hazardous Materials Management Facility
- Check listings at [ecocycle.org/a-zguide](http://ecocycle.org/a-zguide)



### Electronics & Appliances

RECYCLE AT THESE LOCATIONS:

- CHaRM (fees apply)
- with a responsible company listed here: [ecocycle.org/a-zguide/electronics](http://ecocycle.org/a-zguide/electronics)

Disposing of electronics in the trash is illegal in Colorado.



### Food Scraps

COMPOST in curbside bins and at:

- CHaRM: Fees apply. Visit [ecocycle.org/charm](http://ecocycle.org/charm) for details.
- Longmont Waste Diversion Center
- Nederland Transfer Station & Recycling Drop-off Center

### Cooking Oil

RECYCLE AT THESE LOCATIONS ONLY – NOT in curbside bins:

- CHaRM: \$3 facility fee applies
- Longmont Waste Diversion Center



### Holiday String Lights & Extension Cords

RECYCLE AS SCRAP METAL AT THESE LOCATIONS ONLY (no fee). NOT in curbside bins

- CHaRM
- Nederland Transfer Station and Recycling Center
- Longmont Waste Diversion Center Dec. 26 - Jan. 31 in specially-marked cart during staffed hours
- Allenspark Drop-Off Center

Attached light bulbs are OK. Please bundle cords & tie with the loose end so they don't get caught in machinery.



### Holiday Cards

REUSE cards as next year's gift tags or place-setting cards.

RECYCLE in curbside bins and drop-off centers. NO cards embossed with foil or other non-paper material. NO non-paper items such as ribbons, photos or photo paper.

### Dark Envelopes

COMPOSTABLE, NOT RECYCLABLE  
Dark-colored envelopes such as reds and greens are not recyclable. White/light-colored paper envelopes are OK to recycle curbside.



### Plastic Bags

Includes grocery/checkout bags, dry-cleaner bags and Ziploc-style bags

RECYCLE AT THESE LOCATIONS ONLY, NOT in curbside bins:

- CHaRM: \$3 facility fee applies
- Longmont Waste Diversion Center
- Participating Grocery Stores: Find locations at [ecocycle.org/a-zguide](http://ecocycle.org/a-zguide).

Bags must be clean, dry and empty. NO tape. Plastic bags are NOT recyclable in curbside bins. Visit [ecocycle.org/charm](http://ecocycle.org/charm) for details.



### #6 White Block Foam

(aka Styrofoam®)

RECYCLE AT THESE LOCATIONS ONLY, NOT in curbside bins:

- CHaRM: \$3 facility fee applies
  - Longmont Waste Diversion Center
- This is the material typically used to package computers, TVs, wine, etc. NO food-grade foam (to-go containers, meat trays, egg cartons, disposable cups, etc.), moisture, tape, packing peanuts (see listing), bubble wrap (see listing), bendable foam, any foam other than #6, or any color other than white.



### Wrapping Paper

for a limited time only in BOULDER & LONGMONT: Dec 26–Jan 31

RECYCLE AT THESE LOCATIONS ONLY (no fee). NOT in curbside bins:

- Boulder County Recycling Center in the bin marked "Wrapping Paper"
- CHaRM in the bin marked "Compost"
- Longmont Waste Diversion Center in the bin marked "Wrapping Paper"

Please do not put wrapping paper in with single-stream recycling.

This material will be accepted for a limited time, as it is a very low-grade material and normally considered a contaminant in the recycling bin because of its high clay and ink content and low fiber content. NO metallic wrapping paper, ribbons, bows, ornaments, tissue paper, fluorescent or dark paper, or wrapping paper covered with tape.



### Paper Shopping Bags & Cardboard Boxes

RECYCLE curbside or drop-off centers. Large staples & shiny graphics OK. REMOVE non-paper handles (string, etc), metal grommets.

### Packing Peanuts

REUSE ONLY, NOT RECYCLABLE

Take to packing & shipping store, find locations at [ecocycle.org/a-zguide](http://ecocycle.org/a-zguide).

### Bubble Wrap

RECYCLE AT CHaRM ONLY, NOT in curbside bins.

### Tissue Paper

COMPOST in curbside bins and at these locations:

- CHaRM (fees apply)
  - Longmont Waste Diversion Center
- NO glitter or other non-paper items.

More tips and resources for making your holidays green at [www.ecocycle.org/holidayguide](http://www.ecocycle.org/holidayguide)



## FREE COVID-19 TESTING IN LYONS

Every Friday through the end of the year

Boulder County Public Health, in partnership with Boulder Community Health, and the Colorado Department of Public Health and Environment will begin providing free COVID testing in Lyons.

No appointment is needed, and individuals do not need to have COVID-19 symptoms to be tested. Individuals who are 65 years old or older or are essential workers are encouraged to attend.

**Where:** Parking lot of Church of Jesus Christ of Latter-Day Saints, 200 2nd Ave., Lyons  
**Time:** 1:30 – 3 p.m.

Dates: December 4, 11 and 18, weather permitting. There will not be any testing in Lyons on Friday, Dec 25.

**Requirement:** Mask must be worn

For more information, visit [boco.org/covid-19](http://boco.org/covid-19).



## HOLIDAY GIVING DRIVE

Lyons Town Hall

Mon - Fri, 8:00 a.m. to 4:30 p.m.

You can help ensure every neighbor enjoys holiday meals and a comfortable season, by donating toiletries, gift cards, or funds to the Holiday Giving Drive. The Holiday Giving Drive is a collaboration between the Town of Lyons and the Lyons Emergency Assistance Fund (LEAF), to provide hope and a spirit of community this holiday season.

Donations of toiletries, gift cards, and funds can be dropped off in the Cookie Monster Donation Bin, located in the front office of Town Hall, during normal office hours (Mon – Fri, 8AM to 4:30PM). The donations will be collected and distributed by LEAF.

If you'd like to learn more about supporting or seeking assistance from LEAF, visit [leaflyons.org](http://leaflyons.org).

Thank you in advance for giving back to the community and supporting our neighbors this holiday season.

## 2ND AVENUE BRIDGE REPLACEMENT PROJECT

This project will replace the existing 2nd Avenue bridge over St. Vrain Creek, to better accommodate future flood events. Starting on or after December 7, the 2nd Avenue alley will permanently close at 2nd Avenue. Access to several 2nd Avenue properties will be provided through a new permanent alley currently under construction at 221 Park Street.

Temporary access modifications are also planned for the 2nd Avenue alley south of Park Street and east of 2nd Avenue. Starting on or after December 7, access to several 2nd Avenue properties will be provided through a temporary alley access constructed on Town property located at 117 Park Street.

The 2nd Avenue bridge over St. Vrain Creek will be closed for full replacement starting on or around December 7 through May 2021. All work is weather-dependent and the schedule is subject to change. Access to all properties will be maintained.

Visit [townoflyons.com/bridge](http://townoflyons.com/bridge) for more information and project updates.

[www.townoflyons.com](http://www.townoflyons.com)  
303-823-6622  
[communications@townoflyons.com](mailto:communications@townoflyons.com)

Lyons Town Hall  
P.O. Box 49  
Lyons, CO 80540





eco-cycle®

# HOLIDAY

*recycling guide 2019*

## Don't Give "Stuff"

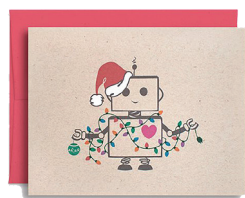
Instead of buying new products, give meaningful gifts like experiences to museums, parks, or concerts. Or gift something edible like a dessert or a healthy snack packaged in reusable mason jars. Also consider products that will help others be less wasteful, such as stainless steel water bottles, mugs, or reusable lunch/to-go containers.



options like comics, posters, maps, or calendars (all recyclable), fabric, and reusable cloth gift bags, etc. For shipping, replace foam or bubble wrap with balled-up paper.

## Zero Waste Gift Wrapping

While Eco-Cycle will accept gift wrapping paper for a limited time, its high clay and low paper content makes it difficult to recycle. Instead, choose reused/reusable



## Sustainable Holiday Gift Tags & Cards

Have holiday cards lying around? Save them to repurpose them as gift tags or place settings. Consider sending out e-cards this holiday season instead of cards printed on photo paper, which cannot be recycled! Cards embossed with foil, glitter, ribbons, photos, photo paper, and other non-paper materials cannot be recycled.



## Use LED Holiday Lights

Traditional incandescent holiday lights are huge energy-suckers, so much so we recommend recycling your old lights and investing in LEDs. They may cost a little more up front, but holiday LED lights consume 80% less energy and last up to 25 times longer.

## Stop Junk Mail

The holidays can bring catalogs and other mail asking you to buy, buy, buy. But you can stop it! As soon as you receive an unwanted publication, call the 1-800 number and ask to be removed from their list. Learn more tricks, including 6 steps to getting and staying off mailing lists, at [ecocycle.org/junkmail](http://ecocycle.org/junkmail).



## Make Gatherings Zero Waste

Instead of disposable tableware, serve food on real, reusable dishware. Borrow dish sets and glassware from friends, or go thrift store shopping for a special holiday set. Decorate the table with gourds and squash, bowls full of apples, or other seasonal fruits and veggies. Prevent food waste: Ask friends to bring containers for leftovers.



## Re-charge It!

Every year over 15 billion batteries are produced worldwide, and many are alkaline batteries that are thrown out after just one use. Replace your alkaline batteries with rechargeable ones. Newer models can charge in as little as 15 minutes!

eco-cycle®  
Building Zero Waste Communities



Check out our complete Holiday Guide  
online at [ecocycle.org/holidayguide](http://ecocycle.org/holidayguide)



# Don't forget to recycle all of these holidays leftovers!



## Batteries

RECYCLE AT THESE LOCATIONS ONLY,  
NOT in curbside bins

### Rechargeable Batteries:

- Boulder County Hazardous Materials Management Facility
- Longmont Waste Diversion Center

### Alkaline Batteries:

- Boulder County Hazardous Materials Management Facility
- Check listings at [ecocycle.org/a-zguide](http://ecocycle.org/a-zguide)



## Electronics & Appliances

RECYCLE AT THESE LOCATIONS:

- CHaRM (fees apply)
- with a responsible company listed here:  
[ecocycle.org/a-zguide/electronics](http://ecocycle.org/a-zguide/electronics)

Disposing of electronics in the trash is illegal in Colorado.



## Food Scraps

COMPOST in curbside bins and at:

- CHaRM; Fees apply. Visit [ecocycle.org/charm](http://ecocycle.org/charm) for details.
- Longmont Waste Diversion Center
- Nederland Transfer Station & Recycling Drop-off Center

## Cooking Oil

RECYCLE AT THESE LOCATIONS ONLY –  
NOT in curbside bins:

- CHaRM; \$3 facility fee applies
- Longmont Waste Diversion Center



## Holiday String Lights & Extension Cords

RECYCLE AS SCRAP METAL AT THESE  
LOCATIONS ONLY (no fee), NOT in curbside bins

- CHaRM
- Nederland Transfer Station and Recycling Center
- Longmont Waste Diversion Center Dec. 26 - Jan. 31 in specially-marked cart during staffed hours
- Allenspark Drop-Off Center

Attached light bulbs are OK. Please bundle cords & tie with the loose end so they don't get caught in machinery.



## Holiday Cards

REUSE cards as next year's gift tags or place-setting cards.  
RECYCLE in curbside bins and drop-off centers. NO cards embossed with foil or other non-paper material. NO non-paper items such as ribbons, photos or photo paper.

## Dark Envelopes

COMPOSTABLE, NOT RECYCLABLE  
Dark-colored envelopes such as reds and greens are not recyclable. White/light-colored paper envelopes are OK to recycle curbside.

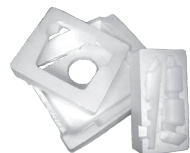


## Plastic Bags

Includes grocery/checkout bags, dry-cleaner bags and Ziploc-style bags  
RECYCLE AT THESE LOCATIONS ONLY,  
NOT in curbside bins:

- CHaRM; \$3 facility fee applies
- Longmont Waste Diversion Center
- Participating Grocery Stores; Find locations at [ecocycle.org/a-zguide](http://ecocycle.org/a-zguide).

Bags must be clean, dry and empty.  
NO tape. Plastic bags are NOT recyclable in curbside bins. Visit [ecocycle.org/charm](http://ecocycle.org/charm) for details.



## #6 White Block Foam

(aka Styrofoam®)

RECYCLE AT THESE LOCATIONS ONLY,  
NOT in curbside bins:

- CHaRM; \$3 facility fee applies
- Longmont Waste Diversion Center

This is the material typically used to package computers, TVs, wine, etc. NO food-grade foam (to-go containers, meat trays, egg cartons, disposable cups, etc.), moisture, tape, packing peanuts (see listing), bubble wrap (see listing), bendable foam, any foam other than #6, or any color other than white.



## Wrapping Paper

for a limited time only in BOULDER &  
LONGMONT: Dec 26–Jan 31  
RECYCLE AT THESE LOCATIONS ONLY  
(no fee), NOT in curbside bins:

- Boulder County Recycling Center in the bin marked "Wrapping Paper"
- CHaRM in the bin marked "Compost"
- Longmont Waste Diversion Center in the bin marked "Wrapping Paper"

Please do not put wrapping paper in with single-stream recycling.

This material will be accepted for a limited time, as it is a very low-grade material and normally considered a contaminant in the recycling bin because of its high clay and ink content and low fiber content. NO metallic wrapping paper, ribbons, bows, ornaments, tissue paper, fluorescent or dark paper, or wrapping paper covered with tape.



## Paper Shopping Bags & Cardboard Boxes

RECYCLE curbside or drop-off centers. Large staples & shiny graphics OK. REMOVE non-paper handles (string, etc), metal grommets.

## Packing Peanuts

REUSE ONLY, NOT RECYCLABLE  
Take to packing & shipping store, find locations at [ecocycle.org/a-zguide](http://ecocycle.org/a-zguide).

## Bubble Wrap

RECYCLE AT CHaRM ONLY,  
NOT in curbside bins.

## Tissue Paper

COMPOST in curbside bins and at these locations:

- CHaRM (fees apply)
  - Longmont Waste Diversion Center
- NO glitter or other non-paper items.

## Foam Wrapping Sheets

RECYCLE AT CHaRM (Boulder);  
\$3 facility fee applies. Place in bin marked "Plastic Bags & Bubble Wrap".  
Visit [ecocycle.org/charm](http://ecocycle.org/charm) for details.

## Drop-off Center Info:

**Boulder County Recycling Center**  
1901 63rd St., Boulder; Open 24 hours

**Boulder County Hazardous Materials Management Facility (HMMF)**  
1901 63rd St., enter at the Boulder County Recycling Center, follow signs  
Open Wed–Sat, 8:30am–4pm

**Eco-Cycle/City of Boulder CHaRM: Center for Hard-to-Recycle Materials**  
6400 Arapahoe Rd., Boulder  
Co-located with ReSource  
Mon–Sat, 9am–5pm; Closed Sundays  
Fees apply for some materials. For a full list and prices, visit [www.ecocycle.org/charm](http://www.ecocycle.org/charm)

**Longmont Waste Diversion Center**  
For residents only. Bring your ID and a recent utility bill to show you are a City of Longmont trash subscription customer.  
140 Martin St., Longmont  
Staffed hours (until April): Mon–Sat, 7:30am–4:45pm  
Closed Dec. 25 and Jan. 1  
[www.longmontcolorado.gov](http://www.longmontcolorado.gov)

**Nederland Transfer Station & Recycling Drop-off Center**  
286 Ridge Road, Nederland  
See website for hours: [www.bouldercounty.org/environment/trash/nederland-transfer-and-recycle](http://www.bouldercounty.org/environment/trash/nederland-transfer-and-recycle)

**Allenspark Transfer Station & Recycling Drop-off Center**  
County Rd. 84 & State Hwy. 7.  
Open Sun, Mon, Wed, Fri,  
Sat: 10:00 am - 4:00 pm;  
Closed Tues & Thurs

**Lyons Drop-Off Recycling Center**  
198 2nd Ave, on the south side of the lot  
Open everyday, from dawn to dusk

## Tree Recycling

See listings below to learn where to recycle a tree in your community.  
Please be sure to remove all tinsel, lights, stands, etc. Do not leave other materials like garlands, wreaths, or trash.

**Boulder County/City of Boulder**  
Yard Waste and Wood Drop-off Center  
[westerndisposal.com](http://westerndisposal.com); Curbside collection also available. 303-444-2037

**Erie**  
[erieco.gov](http://erieco.gov), 303-926-2870

**Lafayette**  
[cityoflafayette.com](http://cityoflafayette.com), 303-661-1306

**Louisville**  
[louisvilleco.gov](http://louisvilleco.gov), 303-335-4733

**Longmont**  
[longmontcolorado.gov](http://longmontcolorado.gov), 303-651-8416 ext. 8

**Superior**  
[superiorcolorado.gov/community/trash-recycling](http://superiorcolorado.gov/community/trash-recycling); 303-499-3675

More tips and resources for  
making your holidays green at  
[www.ecocycle.org/holidayguide](http://www.ecocycle.org/holidayguide)

## Got Recycling Questions?

A-Z Recycling Guide: [ecocycle.org/a-zguide](http://ecocycle.org/a-zguide)

Email: [recycle@ecocycle.org](mailto:recycle@ecocycle.org)

Eco-Cycle Recycling Hotline: 303-444-6634