

DEC
2018

Volume 14
Issue 12

LYONS LINK



COMMUNITY CALENDAR

DECEMBER

- 1 Parade of Lights & Fireworks
- 1 & 2 Holiday Bazaar
- 3 Board of Trustees Meeting
- 17 Board of Trustees Meeting
- 24 Town Offices Closed
- 25 Town Offices Closed

JANUARY

- 1 Town Offices Closed
- 7 Board of Trustees Meeting
- 21 Town Offices Closed
- 22 Board of Trustees Meeting
- 26 & 27 Hunters Education Course

Register online for rec programs
www.townoflyons.com/157



KEEP IT LOCAL, SHOP LYONS & WIN!

Kick off a month-long Lyons shopping spree this year! Shop any Lyons establishment from November 24 through December 24 to be entered in weekly drawings sponsored by the Town for \$25 at your favorite local shop, or a grand prize basket from the Lyons Chamber of Commerce, full of gifts from local businesses.

Keep it local and reap rewards!

How to play:

1. Spend at least \$10 in a Lyons business.
2. Snap a picture of your purchase AND your receipt with amount spent.
3. Post your picture using #shoplyonsco or email it to smartindale@townoflyons.com.
4. Stay tuned for notification that you won to select your gift card to your favorite local spot.
5. Keep shopping! More entries increase your odds for the grand prize basket!

Two winners will be randomly selected each week of the month. Let's show our Lyons businesses some love!



How many blue lights are on the tree as you enter Historic Downtown Lyons?

3000



ICE AND SNOW CLEARANCE

Let's work together to keep our streets and sidewalks accessible for everyone. It's the neighborly thing to do...

Snow and ice make traversing sidewalks difficult and dangerous.

...and it's the law.

In accordance with the Lyons Municipal Code, property owners - including both residents and businesses - must remove snow or ice 24 hours after the last accumulation. If sidewalks remain hazardous and unkept, the Town may mitigate, and charges sent to the property owner.

Need Assistance? Lyons Volunteers may assist those who need help shoveling their sidewalks. Request help at www.lyonsvolunteers.org

Town of Lyons Snow Response Plan www.townoflyons.com/snowresponseplan for more details.



BOT MEETINGS

The Board of Trustees meetings are held the 1st and 3rd Mondays of each month at 7 pm at Town Hall. The public is always welcome.

303-823-8250
communications@townoflyons.com

P.O. Box 49
Lyons, CO 80540





SAVE WATER & MONEY!

A leaking toilet can waste up to 500 gallons of water per day. You can reduce your water bill and conserve water by checking for and fixing leaks inside and outside of your property.



IF WE CAN'T REACH YOU, WE CAN'T ALERT YOU

The emergency alert system allows residents of Boulder County and all cities within the county to be notified of emergency situations in a variety of ways including on their cell phone, home and work phones, and by text messaging or email.

You will receive time-sensitive messages for any emergency situations happening near your chosen locations such as home, work, school, and family.

You pick where, you pick how. Sign up today at www.BoCo911alert.com



GIVE WHERE YOU LIVE



The Town of Lyons is fortunate to have many non-profits and philanthropic groups who work together to make Lyons a

better place to live, work and play. For Colorado Gives Day, we encourage you to direct your generosity to local causes. Financial contributions go a long way when funds are given directly to these local organizations. Here are a few of the local non-profits doing great work in our community.

Lyons Community Foundation
www.lyonscf.org/give

LEAF (Lyons Emergency Assistance Fund) www.leaflyons.org

Lyons Volunteers:
www.lyonsvolunteers.org

Lyons Redstone Museum
www.lyonsredstonemuseum.com

These local non-profits always welcome community members to participate as volunteers as well. Please support your preferred non-profit if you can.



WASTEWATER RATES

As part of the 2019 budget process, the Board of Trustees recently approved a wastewater utility rate increase. These public services are not funded by tax dollars, rather they are supported by utility rates and fees paid to the corresponding "enterprise fund."

Each user of the publicly owned wastewater treatment plant is charged a monthly service charge.

For Town-provided, metered water residential customers, there is a wastewater monthly service (base) charge, plus a volume charge. The consumer's volume rate is based on the average winter consumption of water usage for the three months of December, January and February, divided by 3 and then multiplied by \$9.50 for each 1,000 gallons of water use for such three-month period.

Using average winter consumption, the average household is Lyons is billed for 3,000 gallons monthly. Wastewater rates were last raised in February 2016. The Town of Lyons offers a low-income wastewater rate. If you meet HUD eligibility guidelines, please inquire at Town Hall.

For Town-provided, metered water for nonresidential customers, there is a wastewater monthly service (base) charge, plus a volume charge. The consumer's volume rate is billed at \$9.25 for every 1,000 gallons used *each month*.

Unmetered water users pay a flat wastewater service charge.

Wastewater rates will become effective January 1, 2019 and will be billed beginning with the February 2019 utility bill.

To see the rate schedule visit www.townoflyons.com/wastewater



Trash put down the toilet clogs pumps and makes wastewater treatment more difficult. These difficulties can increase the cost of wastewater treatment for the community. Remember toilets are not trash cans!



HUNTER EDUCATION

In Colorado, any hunter born after January 1, 1949 is required to take a 15-hour course. Hunter Education certificates are valid in all states and are good for life (unless laws are violated). Areas to be touched on during the course include: survival, ethics, conservation, wildlife management, the law, field care of game, game identification, and the philosophy of hunting. To sign up for the course please call 303- 823-8250 and leave a message with all names of those who will be attending and contact information.

Age: 7 and older

Fee: \$10 per student

Dates: Saturday Jan 26
(8am-5pm) &
Sunday Jan 27
(9am-3pm)

Location: Walt Self Building

Instructor: Mike Hora

Class Size: 10 Minimum | 40 Maximum



BE A GOOD NEIGHBOR

With winter upon us, remember commercial and residential sidewalks are required to be cleared within 24 hours after a snowstorm.



2019 RESIDENT PARKING PASSES

2018 Parking Passes expire on December 31st. The 2019 parking passes for LaVern Johnson and Bohn Park are available to residents of Lyons (utility billing customers only). One free resident parking pass per household, second pass may be obtained for \$35, third pass will be \$55. Golf carts are considered vehicles. The one free parking pass per household may be used for a golf cart.

Sign up for a 2019 resident parking pass on the Town of Lyons website

www.townoflyons.com/parkingpass

Non-residents may purchase a season parking pass for a flat rate of \$75 per vehicle. The parking fee for 2019 is currently set at \$5 for every 4 hours and may be paid at the kiosks located throughout the parks with the receipt placed on the windshield. Parking fees are enforced.

eco-cycle®

HOLIDAY

recycling guide 2018

Don't Give "Stuff"

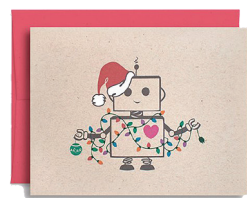
Instead of buying new products, give meaningful gifts like experiences to museums, parks, or concerts. Or gift something edible like a dessert or a healthy snack packaged in reusable mason jars. Also consider products that will help others be less wasteful, such as stainless steel water bottles, mugs, or reusable lunch/to-go containers.



options like comics, posters, maps, or calendars (all recyclable), fabric, and reusable cloth gift bags, etc. For shipping, replace foam or bubble wrap with balled-up paper.

Zero Waste Gift Wrapping

While Eco-Cycle will accept gift wrapping paper for a limited time, its high clay and low paper content makes it difficult to recycle. Instead, choose reused/reusable



Sustainable Holiday Gift Tags & Cards

Have holiday cards lying around? Save them to repurpose them as gift tags or place settings. Consider sending out e-cards this holiday season instead of cards printed on photo paper, which cannot be recycled! Cards embossed with foil, glitter, ribbons, photos, photo paper, and other non-paper materials cannot be recycled.



Use LED Holiday Lights

Traditional incandescent holiday lights are huge energy-suckers, so much so we recommend recycling your old lights and investing in LEDs. They may cost a little more up front, but holiday LED lights consume 80% less energy and last up to 25 times longer.

Stop Junk Mail

The holidays can bring catalogs and other mail asking you to buy, buy, buy. But you can stop it! As soon as you receive an unwanted publication, call the 1-800 number and ask to be removed from their list. Learn more tricks, including 6 steps to getting and staying off mailing lists, at ecocycle.org/junkmail.



Make Gatherings Zero Waste

Instead of disposable tableware, serve food on real, reusable dishware. Borrow dish sets and glassware from friends, or go thrift store shopping for a special holiday set. Decorate the table with gourds and squash, bowls full of apples, or other seasonal fruits and veggies. Prevent food waste: Ask friends to bring containers for leftovers.



Re-charge It!

Every year over 15 billion batteries are produced worldwide, and many are alkaline batteries that are thrown out after just one use. Replace your alkaline batteries with rechargeable ones. Newer models can charge in as little as 15 minutes!

eco-cycle®
Building Zero Waste Communities



Check out our complete Holiday Guide
online at ecocycle.org/holidayguide



Don't forget to recycle all of these holidays leftovers!



Batteries

RECYCLE AT THESE LOCATIONS ONLY,
NOT in curbside bins

Rechargeable Batteries:

- Boulder County Hazardous Materials Management Facility
- Longmont Waste Diversion Center

Alkaline Batteries:

- Boulder County Hazardous Materials Management Facility
- Check listings at ecocycle.org/a-zguide



Electronics & Appliances

RECYCLE AT THESE LOCATIONS:

- CHaRM (fees apply)
- with a responsible company listed here:
ecocycle.org/a-zguide/electronics

Disposing of electronics in the trash is illegal in Colorado.



Food Scraps

COMPOST in curbside bins and at:

- CHaRM; Fees apply. Visit ecocycle.org/charm for details.
- Longmont Waste Diversion Center
- Nederland Transfer Station & Recycling Drop-off Center

Cooking Oil

RECYCLE AT THESE LOCATIONS ONLY –
NOT in curbside bins:

- CHaRM; \$3 facility fee applies
- Longmont Waste Diversion Center



Holiday String Lights & Extension Cords

RECYCLE AS SCRAP METAL AT THESE
LOCATIONS ONLY (no fee), NOT in curbside bins

- CHaRM
- Nederland Transfer Station and Recycling Center
- Longmont Waste Diversion Center Dec. 26 - Jan. 31 in specially-marked cart during staffed hours
- Allenspark Drop-Off Center

Attached light bulbs are OK. Please bundle cords & tie with the loose end so they don't get caught in machinery.



Holiday Cards

REUSE cards as next year's gift tags or place-setting cards.
RECYCLE in curbside bins and drop-off centers. NO cards embossed with foil or other non-paper material. NO non-paper items such as ribbons, photos or photo paper.

Dark Envelopes

COMPOSTABLE, NOT RECYCLABLE
Dark-colored envelopes such as reds and greens are not recyclable. White/light-colored paper envelopes are OK to recycle curbside.



Plastic Bags

Includes grocery/checkout bags, dry-cleaner bags and Ziploc-style bags
RECYCLE AT THESE LOCATIONS ONLY,
NOT in curbside bins:

- CHaRM; \$3 facility fee applies
- Longmont Waste Diversion Center
- Participating Grocery Stores; Find locations at ecocycle.org/a-zguide.

Bags must be clean, dry and empty.
NO tape. Plastic bags are NOT recyclable in curbside bins. Visit ecocycle.org/charm for details.



Paper Shopping Bags & Cardboard Boxes

RECYCLE curbside or drop-off centers. Large staples & shiny graphics OK. REMOVE non-paper handles (string, etc), metal grommets.

Packing Peanuts

REUSE ONLY, NOT RECYCLABLE
Take to packing & shipping store, find locations at ecocycle.org/a-zguide.

Bubble Wrap

RECYCLE AT CHaRM ONLY,
NOT in curbside bins.

Tissue Paper

COMPOST in curbside bins and at these locations:

- CHaRM (fees apply)
 - Longmont Waste Diversion Center
- NO glitter or other non-paper items.

Foam Wrapping Sheets

RECYCLE AT CHaRM (Boulder);
\$3 facility fee applies. Place in bin marked "Plastic Bags & Bubble Wrap".
Visit ecocycle.org/charm for details.



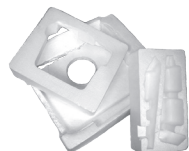
Wrapping Paper

for a limited time only in BOULDER &
LONGMONT: Dec 26–Jan 31
RECYCLE AT THESE LOCATIONS ONLY
(no fee), NOT in curbside bins:

- Boulder County Recycling Center in the bin marked "Wrapping Paper"
- CHaRM in the bin marked "Compost"
- Longmont Waste Diversion Center in the bin marked "Wrapping Paper"

Please do not put wrapping paper in with single-stream recycling.

This material will be accepted for a limited time, as it is a very low-grade material and normally considered a contaminant in the recycling bin because of its high clay and ink content and low fiber content. NO metallic wrapping paper, ribbons, bows, ornaments, tissue paper, fluorescent or dark paper, or wrapping paper covered with tape.



#6 White Block Foam

(aka Styrofoam®)

RECYCLE AT THESE LOCATIONS ONLY,
NOT in curbside bins:

- CHaRM; \$3 facility fee applies
- Longmont Waste Diversion Center

This is the material typically used to package computers, TVs, wine, etc. NO food-grade foam (to-go containers, meat trays, egg cartons, disposable cups, etc.), moisture, tape, packing peanuts (see listing), bubble wrap (see listing), bendable foam, any foam other than #6, or any color other than white.

More tips and resources for
making your holidays green at
www.ecocycle.org/holidayguide

Drop-off Center Info:

Boulder County Recycling Center
1901 63rd St., Boulder; Open 24 hours

Boulder County Hazardous Materials Management Facility (HMMF)
1901 63rd St., enter at the Boulder County Recycling Center, follow signs
Open Wed–Sat, 8:30am–4pm

Eco-Cycle/City of Boulder CHaRM: Center for Hard-to-Recycle Materials
6400 Arapahoe Rd., Boulder
Co-located with ReSource
Mon–Sat, 9am–5pm; Closed Sundays
Fees apply for some materials. For a full list and prices, visit www.ecocycle.org/charm

Longmont Waste Diversion Center
For residents only. Bring your ID and a recent utility bill to show you are a City of Longmont trash subscription customer.
140 Martin St., Longmont
Staffed hours (until April): Mon–Sat, 7:30am–4:45pm
Closed Dec. 25 and Jan. 1
www.longmontcolorado.gov

Nederland Transfer Station & Recycling Drop-off Center
286 Ridge Road, Nederland
See website for hours: www.bouldercounty.org/environment/trash/nederland-transfer-and-recycle

Allenspark Transfer Station & Recycling Drop-off Center
County Rd. 84 & State Hwy. 7.
Open Sun, Mon, Wed, Fri,
Sat: 10:00 am - 4:00 pm;
Closed Tues & Thurs

Lyons Drop-Off Recycling Center
198 2nd Ave, on the south side of the lot
Open everyday, from dawn to dusk

Tree Recycling

See listings below to learn where to recycle a tree in your community.
Please be sure to remove all tinsel, lights, stands, etc. Do not leave other materials like garlands, wreaths, or trash.

Boulder County/City of Boulder
Yard Waste and Wood Drop-off Center
westerndisposal.com; Curbside collection also available. 303-444-2037

Erie
erieco.gov, 303-926-2870

Lafayette
cityoflafayette.com, 303-661-1306

Louisville
louisvilleco.gov, 303-335-4733

Longmont
longmontcolorado.gov, 303-651-8416 ext. 8

Superior
superiorcolorado.gov/community/trash-recycling; 303-499-3675

Got Recycling Questions?

A-Z Recycling Guide: ecocycle.org/a-zguide

Email: recycle@ecocycle.org

Eco-Cycle Recycling Hotline: 303-444-6634